

To attach a Portable Gauge Assembly to tower, follow these steps:

1. Disconnect tower's hydraulic hose from tower valve. (See arrow - Figure 1.)

IMPORTANT:

- 1) Close tower valve prior to separating hose from tower valve.
- 2) Position rag or container below components to collect any hydraulic fluid that spills.

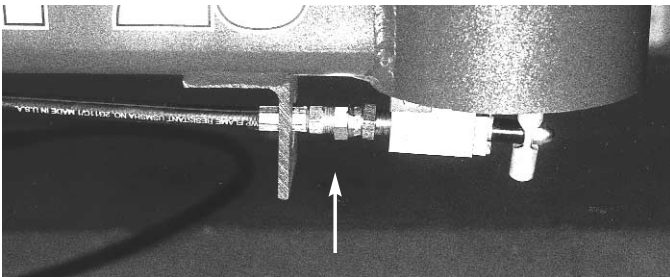


Figure 1

2. Attach street tee assembly to tower valve (see Figure 2) and tighten securely until female coupler is positioned as shown in Figure 2 inset.

IMPORTANT: Apply thread sealant to threads of street tee before connecting.

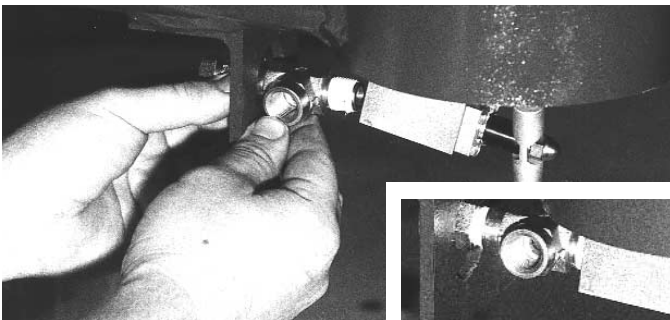


Figure 2

3. Attach 90 degree elbow to street tee connector (see Figure 3) and tighten securely until female coupler is positioned as shown in Figure 3 inset.

IMPORTANT: Apply thread sealant to threads of 90 degree elbow before connecting.

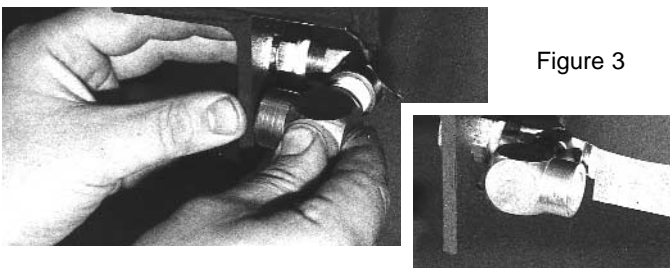


Figure 3

4. Attach pressure gauge hose to 90 degree elbow as shown in Figure 4 and tighten securely.

IMPORTANT: Apply thread sealant to threads of hose before connecting.

5. Mount pressure gauge to bracket at end of tower. (See Figure 5.) If tower has no bracket, weld bracket to end of tower. Figure 6 shows location on EZ Liner 25 towers and Figure 7 shows location on the former EZ Liner II and EZ Liner Classic towers.

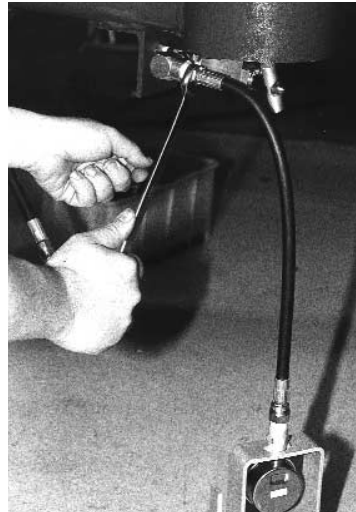


Figure 4

IMPORTANT: If needing to weld bracket to end of tower, be sure welder is grounded to tower pipe.

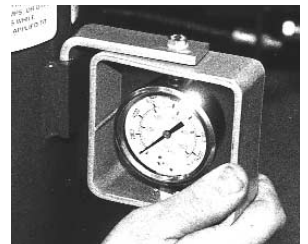


Figure 5

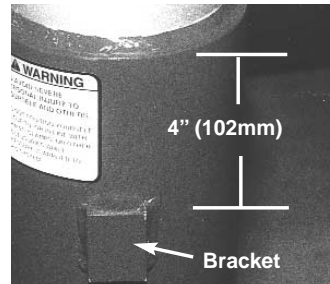


Figure 6

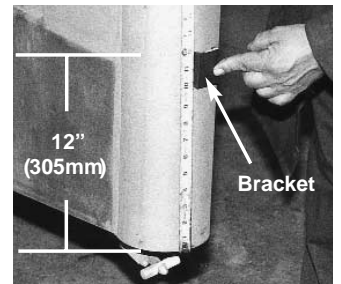


Figure 7

6. Attach tower's hydraulic hose to street tee (see Figure 8) and secure with appropriate size wrenches.

IMPORTANT: DO NOT apply thread sealant to threads of hose before connecting.

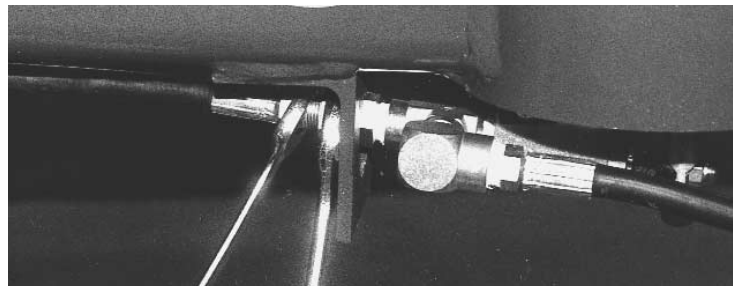


Figure 8

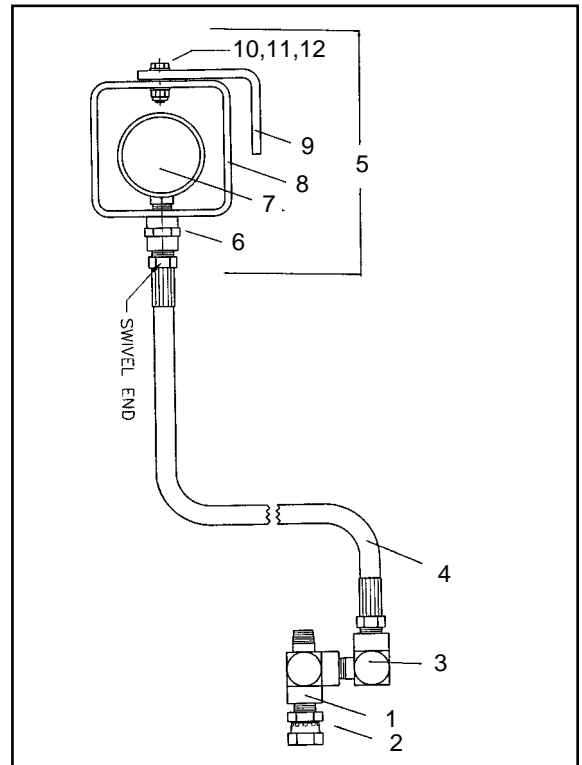


PORTABLE GAUGE ASSEMBLY INSTALLATION INSTRUCTIONS

Parts Information

To order parts for Portable Gauge Assembly, contact Chief Automotive Systems, Inc., 800-445-9262. (If outside United States contact nearest Chief Automotive Systems, Inc. representative.) When contacting Chief, provide the following: name, name of shop, telephone number, address, description of part(s) and part number(s).

Ref.	Part No.	Qty.	Description
	650200		Portable Gauge Assembly, complete
1	649282	1	Street Tee
2	602562	1	Swivel Coupler
3	649281	1	Elbow, 90 Degree, Female x Male
4	649286	1	Hose, 18 1/2 x 3/8M x 3/8 Swivel M
5	649080	1	Portable Gauge, complete
6	649073	1	Female Pipe Coupling
7	649081	1	Gauge, 0-15,000 PSI Bottom Port
8	649078	1	Tube, 4 x 4 x 3/16 wall x 1 1/2 Lg.
9	649077	1	Bar, Formed Gauge Guard
10	630635	1	Bolt, 1 1/2 x 20NC x 1 Gr. 2, Pl. Hex
11	018129	1	Hex Lock Nut, 1/4-20
12	756739	3	Washer, Nylon



CHIEF'S LIMITED ONE-YEAR WARRANTY & LIABILITY

Chief Automotive Systems, Inc. warrants for one year from date of installation and/or purchase any of its products which do not perform satisfactorily due to defect caused by faulty material or workmanship. Chief's obligation under this warranty is limited to the repair or replacement of products which are defective and which have not been misused, carelessly handled, or defaced by repair or repairs made or attempted by others.

CHIEF AUTOMOTIVE SYSTEMS, INC. DOES NOT ASSUME RESPONSIBILITY FOR ANY DEATH, INJURY OR PROPERTY DAMAGE RESULTING FROM THE OPERATOR'S NEGLIGENCE OR MISUSE OF THIS PRODUCT OR ITS ATTACHMENTS. CHIEF MAKES NO WRITTEN, EXPRESS OR IMPLIED WARRANTY WHATSOEVER OF MERCHANTABILITY OR FITNESS FOR A PARTICULAR PURPOSE OR OTHERWISE REGARDING THE EQUIPMENT OR ANY PART OF THE PRODUCT OTHER THAN THE LIMITED ONE-YEAR WARRANTY STATED ABOVE.

Returned merchandise requires a "RETURNED GOODS AUTHORIZATION NUMBER" on the package. Authorization numbers can be obtained by calling or writing the Customer Service Department, Chief Automotive Systems, Inc. No returned merchandise will be accepted without an authorization number. All returned merchandise must be shipped freight prepaid (and may be subject to a handling and restocking charge) to:

Chief Automotive Systems, Inc.
Attn: Returned Goods Dept.
1924 E. Fourth St.
P.O. Box 1368
Grand Island, Ne. 68802
308-384-9747

or

Your Authorized
Chief Automotive Systems, Inc.
Representative