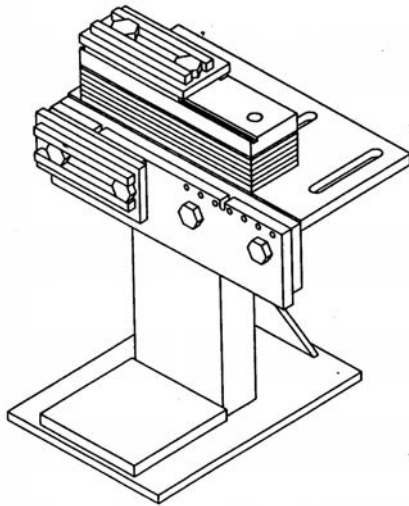


Clamping Adapter (For Basic Holding System)

For vehicles with horizontal
pinchwelds & vertical jack tabs



USERS MANUAL

CHIEFTM
automotive technologies



CHIEF'S LIMITED ONE-YEAR WARRANTY & LIABILITY

Chief Automotive Technologies, Inc. warrants for one year from date of installation and/or purchase any of its products which do not perform satisfactorily due to defect caused by faulty material or workmanship. Chief's obligation under this warranty is limited to the repair or replacement of products which are defective and which have not been misused, carelessly handled, or defaced by repair or repairs made or attempted by others.

CHIEF AUTOMOTIVE TECHNOLOGIES, INC. DOES NOT ASSUME RESPONSIBILITY FOR ANY DEATH, INJURY OR PROPERTY DAMAGE RESULTING FROM THE OPERATOR'S NEGLIGENCE OR MISUSE OF THIS PRODUCT OR ITS ATTACHMENTS. CHIEF MAKES NO WRITTEN, EXPRESS OR IMPLIED WARRANTY WHATSOEVER OF MERCHANTABILITY OR FITNESS FOR A PARTICULAR PURPOSE OR OTHERWISE REGARDING THE EQUIPMENT OR ANY PART OF THE PRODUCT OTHER THAN THE LIMITED ONE-YEAR WARRANTY STATED ABOVE.

INTRODUCTION

A specially designed Adapter Plate can be used with Chief's Basic Holding System when securing vehicles that have horizontal pinchwelds with vertical jack tabs in the corners of the center section. (See Figure 1.)

Each Adapter Plate allows attachment of one clamp to vertical jack tab and another clamp to horizontal pinchweld. Depending upon configuration of pinchweld, horizontal and vertical clamps can be positioned in line with each other or slightly offset. (See Figures 2 and 3.)

Installation

IMPORTANT: Install front and rear anchoring assemblies on one side of vehicle prior to installing anchoring equipment on opposite side of vehicle.

When installing anchoring equipment, use the following procedures:

1. Remove rocker panel moulding from vehicle to expose pinchweld. (See Figure 4.)
2. Install Mounting Brackets on top of mainframe at front and rear of center section.

NOTE: Mounting Bracket's non-adjustable crossbar must engage inner edge of mainframe and adjustable crossbar must engage outer edge of mainframe. Slide adjustable crossbar in as far as possible (see Figure 5) and secure crossbar mounting bolts. Tighten snug only!

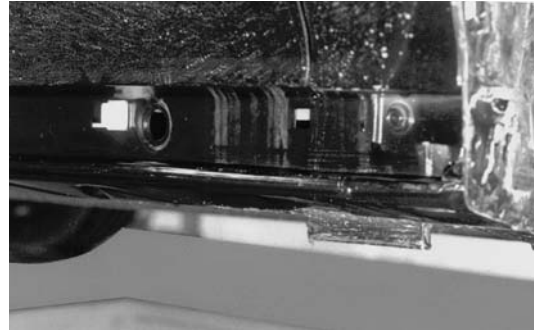


Figure 1

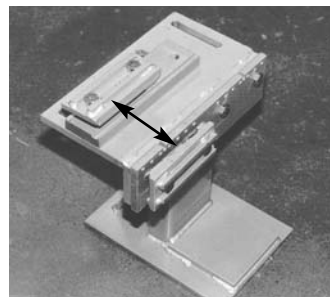


Figure 2

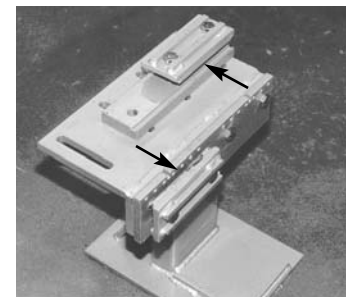


Figure 3

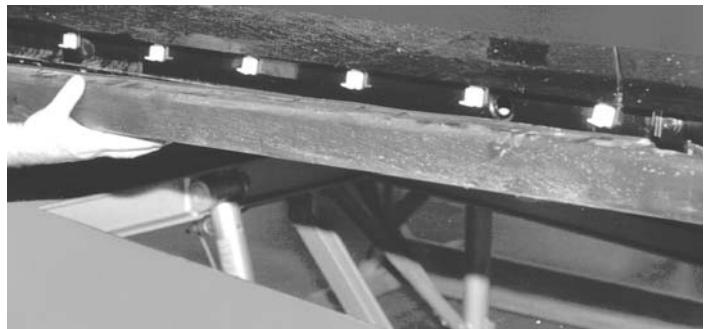


Figure 4

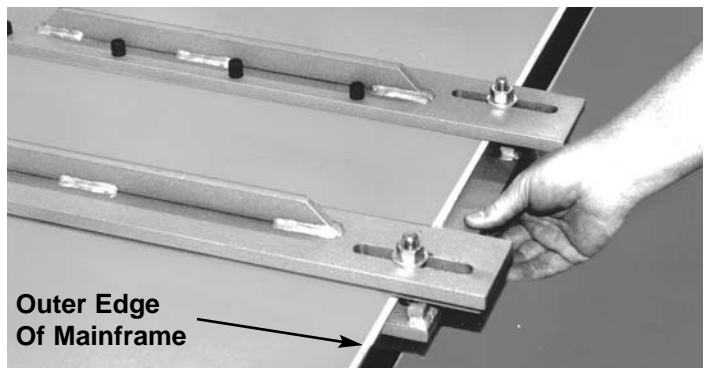


Figure 5

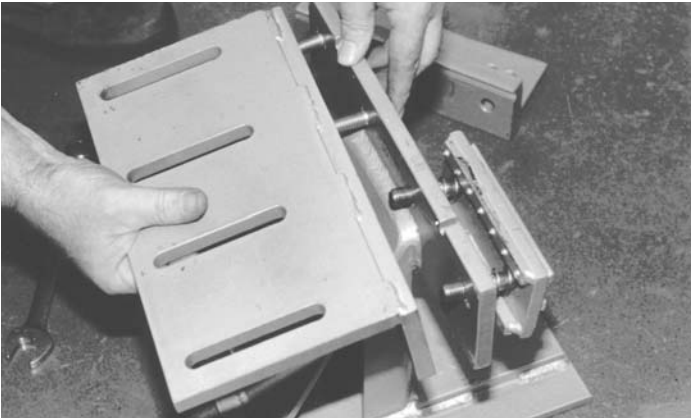


Figure 6

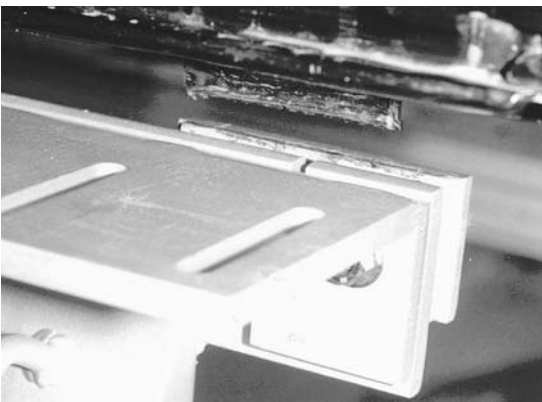


Figure 7

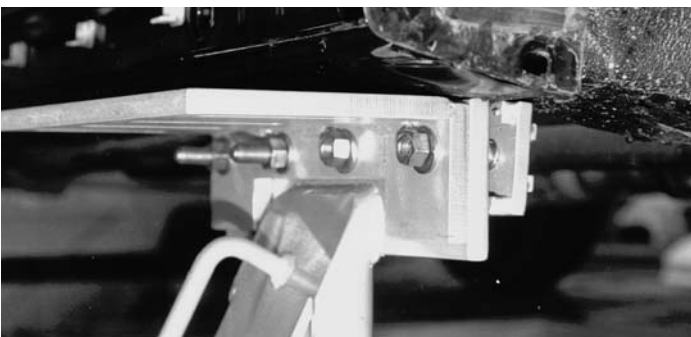


Figure 8

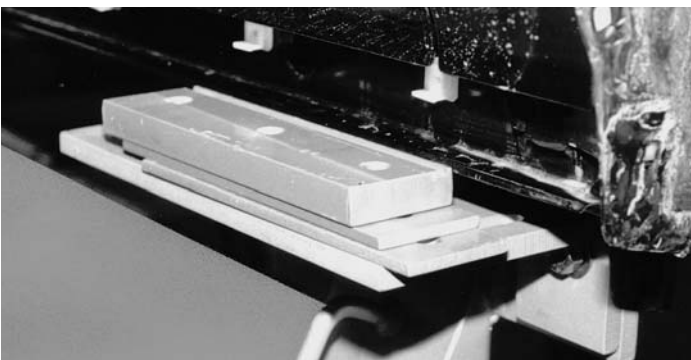


Figure 9

3. Observe front corner of center section and determine which Anchoring Stand clamp will secure the vertical jack tab. Then remove the other clamp and install the Adapter Plate to back of Anchoring Stand using appropriate bolts, nuts and washers. Figure 6 shows the application for the vehicle illustrated in this manual.
4. Raise side of vehicle using suitable lifting device and slide Anchoring Stand into Mounting Bracket on mainframe. Then adjust fore/aft position of Mounting Bracket (if needed) to align clamp with vertical jack tab. (See Figure 7.)
5. Lower vehicle to engage jack tab in vertical clamp, but do not secure clamp at this time.
IMPORTANT: Bottom surface of rocker panel must be firmly against top surface of clamp. (See Figure 8.)
6. Position appropriate number of Mounting Flats on Adapter Plate. (See Figure 9.) Flat (GG) must be on top and its top surface must align with horizontal pinchweld. Also, its groove must face upward and lie next to the pinchweld.
NOTE: Correct number of Flats to use is identified on Chief Vehicle Data Sheets

7. Raise vehicle slightly to allow installation of horizontal clamp. Attach clamp half to the anchoring assembly using appropriate bolts, nuts, washers and springs. Tighten snug only! During this procedure, engage clamp with horizontal pinchweld making sure the groove in the Adapter Plate is completely under the pinchweld. (See Figure 10.)

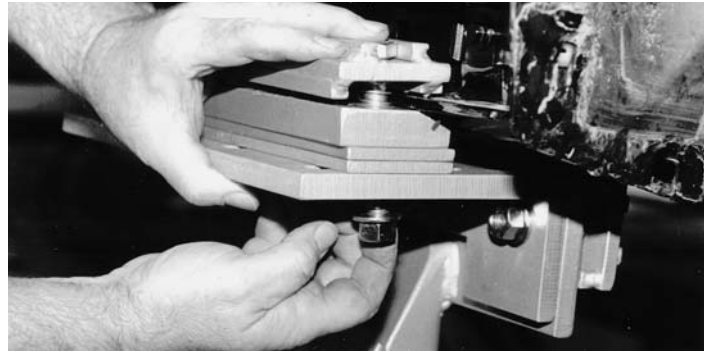


Figure 10

8. Lower vehicle to fully engage jack tab in vertical clamp. Then tighten both the vertical and horizontal clamps. (See Figures 11 and 12.)

9. Repeat Steps 3 — 8 when installing rear anchoring Stand on same side of vehicle. Figure 13 shows the anchoring assembly at rear of center section.

10. After securing front and rear Anchoring Stands to vehicle, secure Mounting Brackets to mainframe.

- a. Tighten crossbar mounting bolts. (Torque to 100 foot pounds maximum.)
- b. Tighten Mounting Bracket hex socket set screws. Tighten snug only!

11. Repeat Steps 1-10 when installing anchoring equipment on opposite side of vehicle.



Figure 11



Figure 12

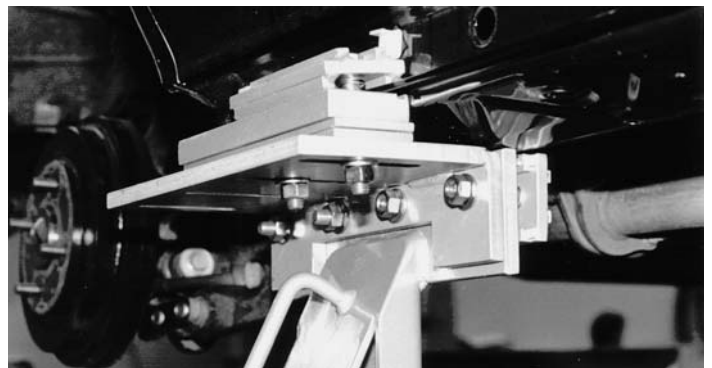


Figure 13

Parts Information

To order replacement parts for the Honda/Acura Clamping Adapter, call the Chief Automotive Technologies, Inc. toll-free telephone number (800-445-9262). If located outside the United States, contact a Chief Automotive Technologies, Inc. representative.

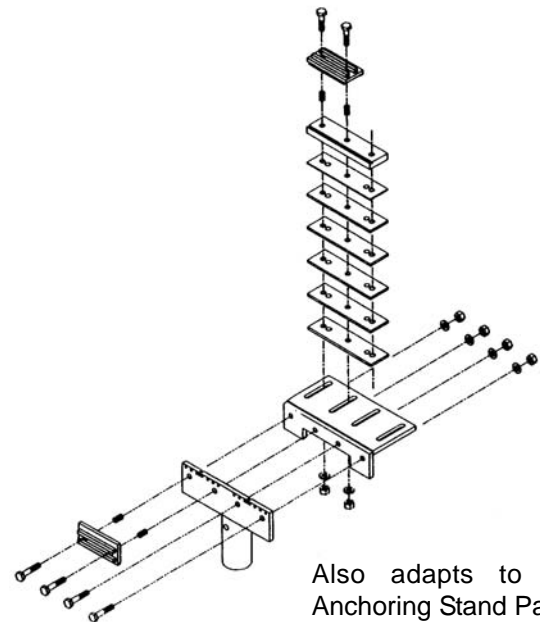
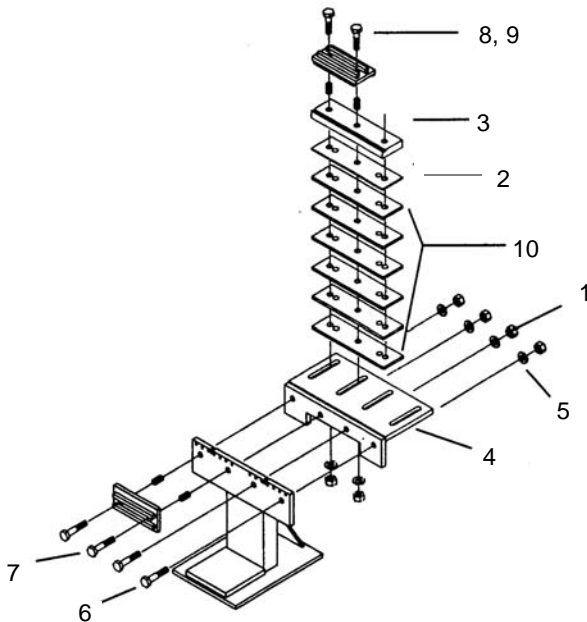
When contacting Chief Automotive Technologies, Inc. by telephone or mail, provide the following information: name, name of business, business telephone number, business address, a description of the part and part number, if available. When ordering, refer to parts list at right and illustrations below.

Ref.	Part No.	Description
	519009	Clamping Adapter Plate Assembly
1	620736	Nut, 1/2-13 UNC, Gr. 8. PI.
2	532003	Flat (MM)
3	532057	Flat (GG)
4	519004	Honda/Acura Clamping Adapter Plate
5	019095	Washer, Flat, 1/2 Series, W. PI.
6	010628	Cap Screw, 1/2-13 UNC x 2, Gr. 8. PI.
7	010630	Cap Screw, 1/2-13 UNC x 2 1/2, Gr. 8. PI.
8	010634	Cap Screw, 1/2-13 UNC x 3 1/2, Gr. 8. PI.
9	010638	Cap Screw, 1/2-13 UNC x 5, Gr. 8. PI.
10	532000	Flat (I)

NOTE: Chief Automotive Technologies, Inc., reserves the right to alter product specifications and/or package components without notice.

Clamping Adapter Plate Assembly

For vehicles with horizontal pinchwelds and vertical jack tabs.



Also adapts to Chief Anchoring Stand Part No. 509006.



**P.O. Box 1368
Grand Island, Nebraska 68802-1368
Phone: 308-384-9747
Fax: 308-384-8966**

www.chiefautomotive.com

**Chief reserves the right to alter product specifications
and/or package components without notice.**