

Nissan Attachments

USERS MANUAL





CHIEF'S LIMITED ONE-YEAR WARRANTY & LIABILITY

Chief Automotive Technologies, Inc. warrants for one year from date of installation and/or purchase any of its products which do not perform satisfactorily due to defect caused by faulty material or workmanship. Chief's obligation under this warranty is limited to the repair or replacement of products which are defective and which have not been misused, carelessly handled, or defaced by repair or repairs made or attempted by others.

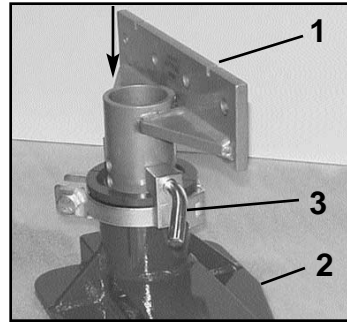
CHIEF AUTOMOTIVE TECHNOLOGIES, INC. DOES NOT ASSUME RESPONSIBILITY FOR ANY DEATH, INJURY OR PROPERTY DAMAGE RESULTING FROM THE OPERATOR'S NEGLIGENCE OR MISUSE OF THIS PRODUCT OR ITS ATTACHMENTS. CHIEF MAKES NO WRITTEN, EXPRESS OR IMPLIED WARRANTY WHATSOEVER OF MERCHANTABILITY OR FITNESS FOR A PARTICULAR PURPOSE OR OTHERWISE REGARDING THE EQUIPMENT OR ANY PART OF THE PRODUCT OTHER THAN THE LIMITED ONE-YEAR WARRANTY STATED ABOVE.

Installation Procedures

Before installing anchoring attachments insert:

- Adapter Tubes in Universal Anchoring Stand Bases and insert height adjusting pins in topside hole. (See Figure 1.)

Then position anchoring stands at four corners of vehicle's center section.



- 1 - Adapter Tube
2 - Universal Anchoring Stand Base
3 - Height Adjusting Pin

Figure 1

Front Adapters

1. At right front corner of center section, remove undercoating from square-shaped hole and bottom subrail. Insert oval T-bolt in square-shaped reference hole on underside of rocker panel. (See Figure 2.) Turn bolt head so that it straddles the reference hole allowing bolt to hang freely from the reference hole.

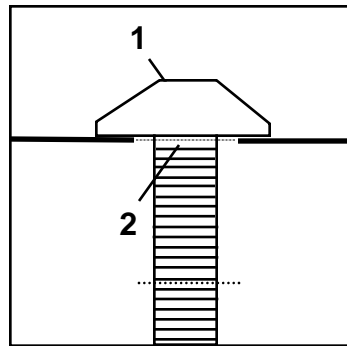


Figure 2

- 1 - Oval T-Bolt
2 - Square-Shaped Reference Hole

2. Position right front adapter plate against subrail on underside of rocker panel. Oval T-bolt must extend downward through slot in rail. (See Figure 3.) Secure adapter plate to subrail using 12mm nut and 1/2 ASTM washer.

NOTE: Shape of adapter plate matches shape of subrail on underside of rocker panel.

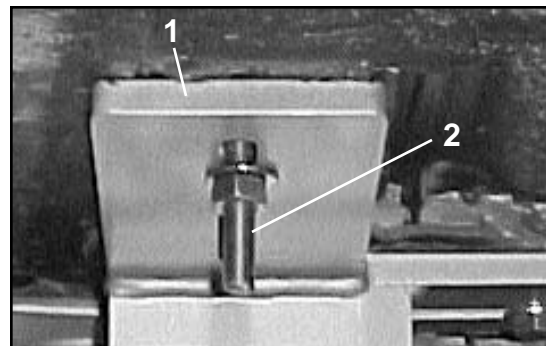


Figure 3

- 1 - Front Adapter Plate 2 - Oval T-Bolt

3. Slide inside rail base into vehicle's subrail as shown at far right of Figure 4. Then secure the inside rail base to the front adapter plate using 12mm bolt and 1/2 ASTM washer. Bolt extends upward through slot in adapter plate and hole in subrail and threads directly into hole in support bar.

4. Repeat steps 1 — 3 to install front adapter plate at left front corner of center section.

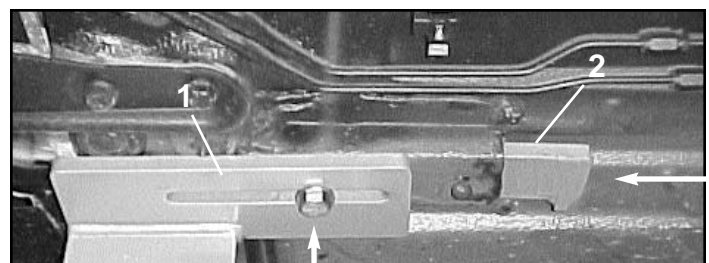


Figure 4

- 1 - Front Adapter Plate 2 - Inside Rail Base

Rear Adapters

1. At right rear corner of center section, install anchoring components as shown in Figure 5. When installing components follow these steps:
 - a. Attach a clamp jaw to the small angle support. Then attach this assembly to the vertical surface of the anchoring tubes. (See Figure 5.)
IMPORTANT: Attach the angle supports to the two middle holes of the anchoring tubes. Then raise the tube in the stand and place the pin in the bottom hole in the side of the tube. (See Figure 6.)
 - b. Position the anchoring stand under the middle of the Horizontal pinch weld. As you lower the vehicle slide the anchoring stand outwards, placing the pinch weld between the clamp jaw and the angle support. Lower the vehicle until all of the weight rests on the anchoring stand. Tighten the bolts holding the clamp jaw to the angle support. (See Figure 7.)
2. Repeat Step 1 (a - b) for the opposite side.
3. After attaching the rear anchoring stands to the vehicle, tighten all nuts and bolts. Then secure the anchoring stands to the mainframe using the tie down plates and bolts.

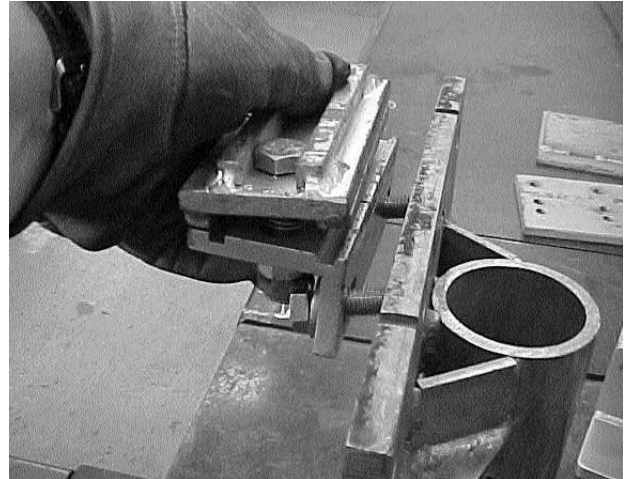


Figure 5

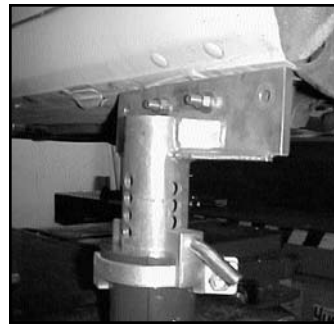


Figure 6

Attach To Anchoring Stand Adapter Tubes

Attach front anchoring assemblies to front vertical surface of anchoring stand adapter tubes. (See Figure 8.)

IMPORTANT: Attach the assemblies to the two middle holes of the adapter tubes using 12mm bolts and nuts and 1/2 ASTM washers.

Adjust And Secure Anchoring Stands

After attaching all four anchoring assemblies to anchoring stands, adjust each stand to the correct height and tighten all nuts and bolts. Then secure the anchoring stands to the mainframe using tie down plates and bolts.



Figure 7



Figure 8

Parts Information

To order replacement parts for the Nissan Attachments, contact Chief Automotive Technologies, Inc. 800-445-9262. (If outside the United States, contact your nearest Chief Automotive Technologies, Inc. representative.)

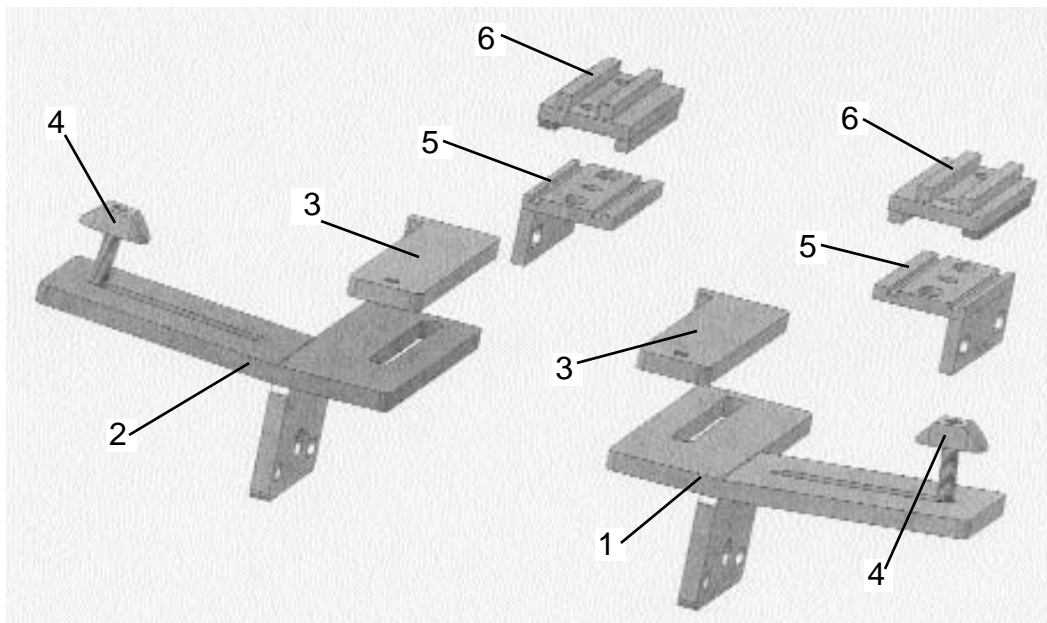
When contacting Chief Automotive Technologies, Inc. by telephone or mail, provide the following information:

name, name of your business, business telephone number, and business address. Additional information needed when ordering: description of part(s) and part numbers.

NOTE: Chief reserves the right to alter product specifications and/or package components without notice.

Ref.	Part No.	Description
Front Setup		
1	519765	Front Left Assembly
2	519766	Front Right Assembly
3	519756	Inside Rail Base
4	519761	Oval T-Bolt Assembly
*	539021	Bolt, M12 x 1.75 x 45mm HHCS
*	539024	Nut, M12 x 1.75mm, Hex
*	019095	Washer, 1/2 ASTM F436
Rear Setup		
5	519633	Small Angle Support
6	498102	Pinchweld Jaw
*	539021	Bolt, M12 x 1.75 x 45mm HHCS
*	539024	Nut, M12 x 1.75mm, Hex
*	019095	Washer, 1/2 ASTM F436
*	092110	Spring, Compression

*Not Shown





**P.O. Box 1368
Grand Island, Nebraska 68802-1368
Phone 308-384-9747
Fax 308-384-8966**

www.chiefautomotive.com

**Chief reserves the right to alter product specifications
and/or package components without notice.**